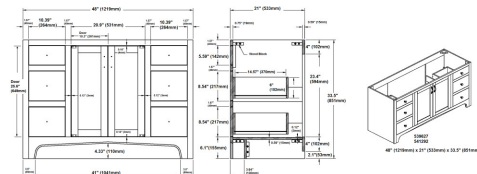
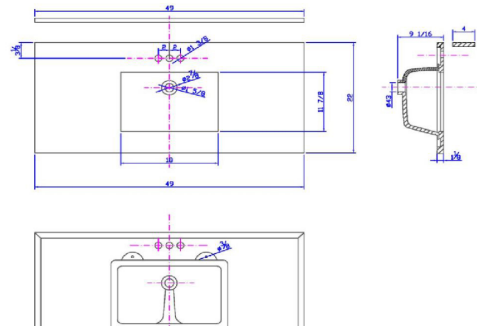


Espresso

Ventura 2-Door 4-Drawer Vanity with Quartz 4" Centerset Flint Vanity Top, Unassembled, 49x22



## SPECIFICATIONS

<b>MATERIAL CONSTRUCTION:</b>	Wood/Quartz
<b>ASSEMBLY REQUIRED:</b>	Yes
<b>ASSEMBLED DIMENSIONS:</b>	38.5" H x 49" L x 22" D
<b>ASSEMBLED WEIGHT:</b>	193 lbs.
<b>TOOLS NEEDED FOR INSTALLATION:</b>	Screwdriver
<b>CONSTRUCTION TYPE:</b>	Face Frame
<b>HINGE STYLE:</b>	Concealed
<b>DOOR STYLE:</b>	2 Pine+MDF Shaker Doors
<b>DRAWER STYLE:</b>	4 Pine Drawers
<b>GLIDE STYLE:</b>	Soft Close
<b>FAKE DWR STYLE:</b>	Pine
<b>DWR #1 DIMENSIONS:</b>	5.98" H x 15.75" W
<b>DWR CONSTRUCTION:</b>	Standard
<b>SHELF STYLE:</b>	N/A
<b>SHELF ADJUSTABILITY INCREMENTS:</b>	N/A
<b>SHELF MAX WEIGHT CAPACITY:</b>	N/A
<b>SHELF DIMENSIONS:</b>	N/A
<b>SHELF THICKNESS:</b>	N/A
<b>SHELF MATERIAL:</b>	N/A
<b>FRAME STYLE:</b>	N/A
<b>FACE FRAME MATERIAL:</b>	Pine
<b>SIDES MATERIAL:</b>	Particle Board
<b>BOTTOM MATERIAL:</b>	Particle Board

<b>TOE KICK INSET WIDTH:</b>	6.1"
<b>BACK PANEL MATERIAL:</b>	N/A
<b>BACK BRACE MATERIAL:</b>	Particle Board
<b>FAUCET TYPE:</b>	Lav Centerset
<b>NUMBER OF MOUNTING HOLES:</b>	3
<b>BOWL MATERIAL:</b>	Ceramic
<b>BACK SPLASH INCLUDED:</b>	Yes
<b>COLOR:</b>	Flint
<b>NUMBER OF BOWLS:</b>	1
<b>BOWL DIMENSIONS:</b>	5.63" H x 11.63" W x 16.85" D
<b>BOWL SHAPE:</b>	Rectangle
<b>SINK THICKNESS:</b>	N/A
<b>MOUNTING TYPE:</b>	Undermount
<b>OVERFLOW HOLE:</b>	Yes
<b>WARRANTY:</b>	1-Year limited warranty
<b>CARB COMPLIANT:</b>	CARB Phase 2
<b>LEGAL FOR SALE IN CALIFORNIA:</b>	Yes
<b>TSCA TITLE IV COMPLIANT:</b>	Yes



TYPE:  
JOB:  
ORDER CODE:  
APPROVALS: