

Richland Two Door Bath Cabinet

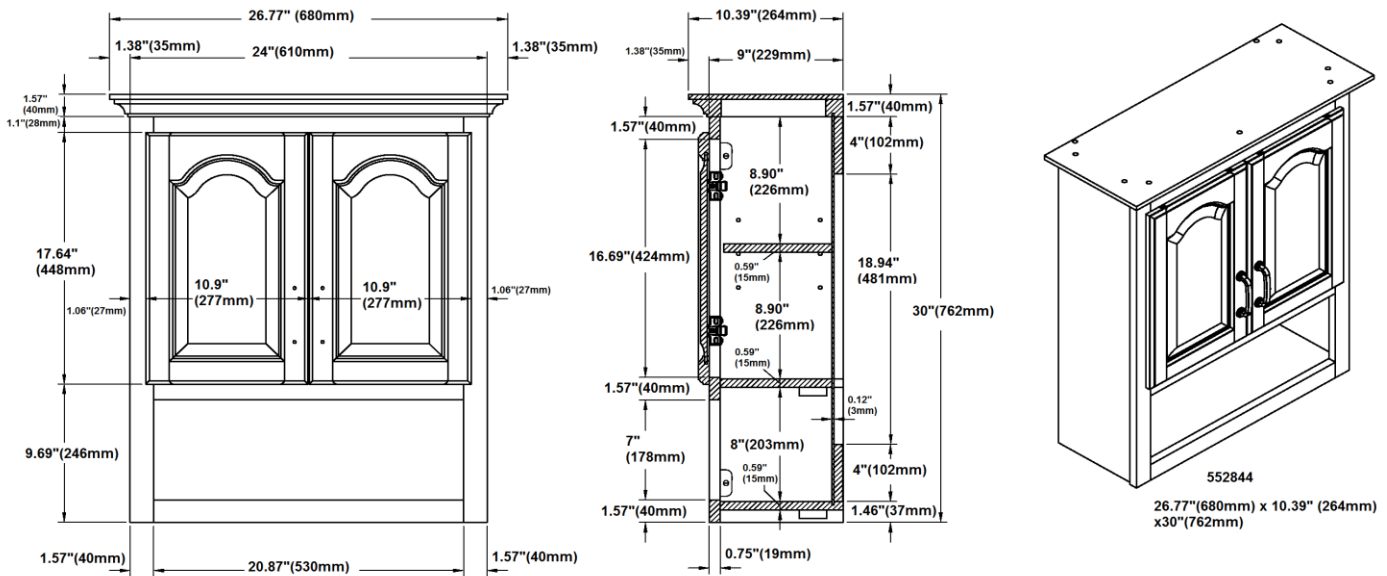


Specifications

- Raised panel doors featuring cathedral design
- Solid door frames
- Antique brass hardware with TruMatch™ finish
- Durable water-resistant finish
- Nutmeg Oak finish
- One Adjustable Shelf



Dimensions



Warranty & Compliances

- Warranty: Limited 1 year warranty
- California 93120: Compliant



Order Codes & Finishes/Colors

26-3/4"w x 10-3/8"d x 30"h

552844

Type:
Job:
Order Code:
Approvals:

Design House reserves the right to make changes in materials, specifications & models at any time. Design House also reserves the right to discontinue product without notice or obligation.