

# Wyndham 2 Door 2 Drawer Vanity



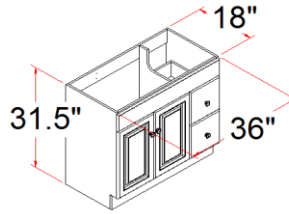
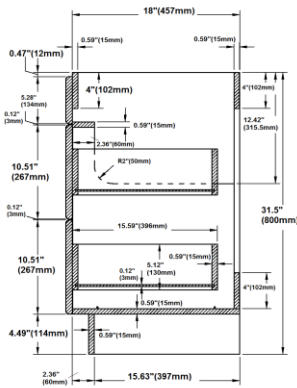
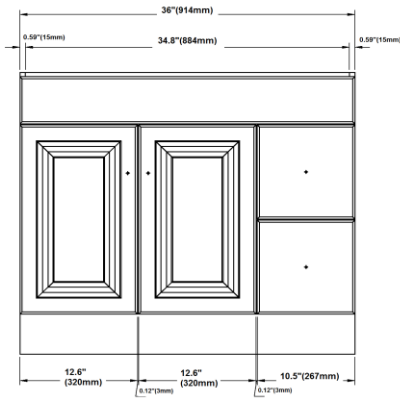
## Specifications

- Durable white thermofoil finish with satin nickel hardware
- Cam lock connection, frameless design
- California 93120 CARB P2 compliant
- Ready to assembly construction
- Square raised door
- Durable white thermofoil door and drawer front
- Particle board with white PVC inside and outside side panels
- 2 Door 2 drawer 1 fake drawer design
- Adjustable and concealable hinge, easy glide drawer glides
- Satin Nickel hardware with TruMatch finish

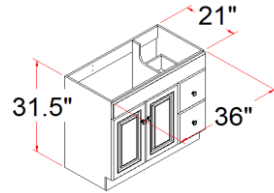
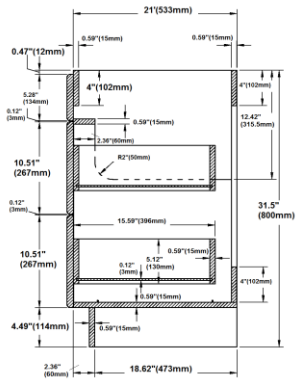
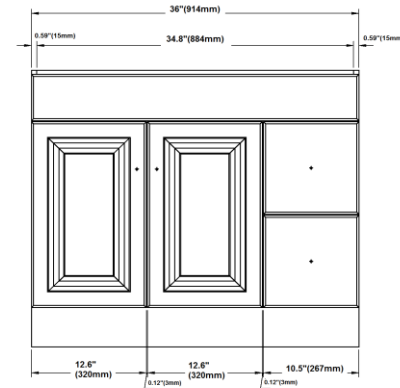


Vanity top and faucet sold separately

## Dimensions



545087



545095

## Warranty & Compliances

- Warranty:** Limited 1 year warranty
- California 93120:** CARB P2 Compliant



## Order Codes & Finishes/Colors

- 36" w x 18" d x 31.5" h      545087
- 36" w x 21" d x 31.5" h      545095

<b>Type:</b>
<b>Job:</b>
<b>Order Code:</b>
<b>Approvals:</b>

Design House reserves the right to make changes in materials, specifications & models at any time. Design House also reserves the right to discontinue product without notice or obligation.