

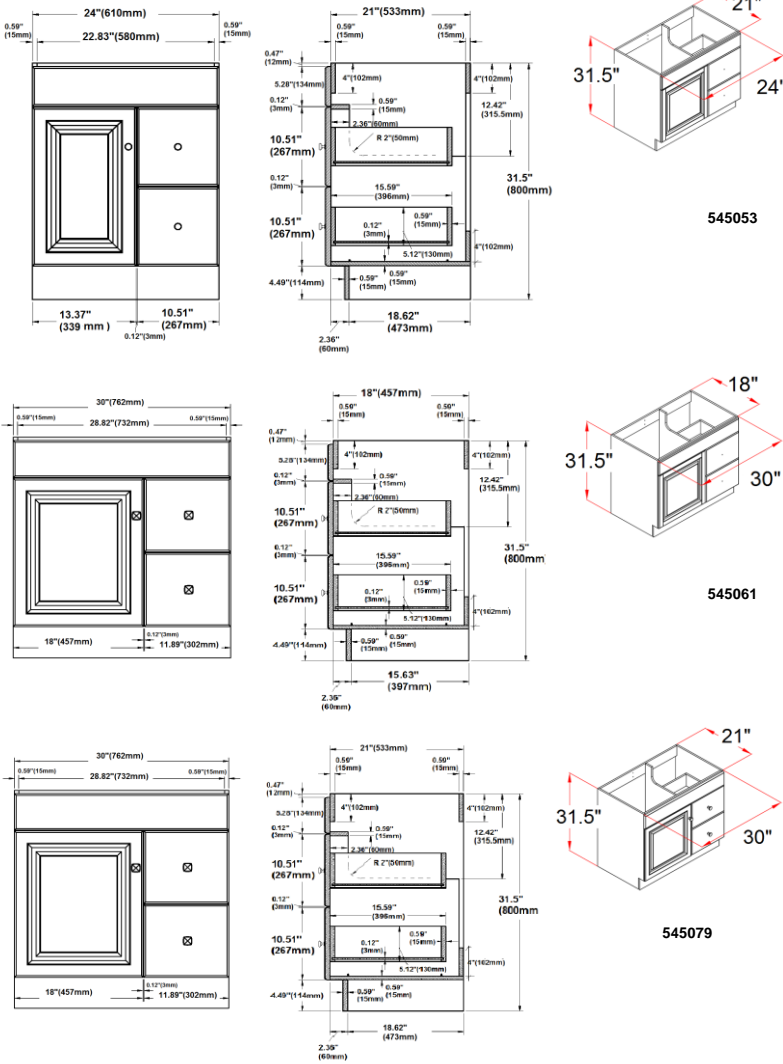
**Specifications**

- Durable white thermofoil finish with satin nickel hardware
- Cam lock connection, frameless design
- California 93120 CARB P2 compliant
- Ready to assembly construction
- Square raised door
- Durable white thermofoil door and drawer front
- Particle board with white PVC inside and outside side panels
- 1 Door 2 drawer 1 fake drawer design
- Door and drawer reversible during assembly
- Adjustable and concealable hinge, easy glide drawer glides
- Satin Nickel hardware with TruMatch finish



Vanity top and faucet sold separately

**Dimensions**



**Warranty & Compliances**

- Warranty: Limited 1 year warranty
- California 93120: CARB P2 compliant



**Order Codes & Finishes/Colors**

- 24" w x 21" d x 31.5" h: 545053
- 30" w x 18" d x 31.5" h: 545061
- 30" w x 21" d x 31.5" h: 545079

Type: \_\_\_\_\_  
 Job: \_\_\_\_\_  
 Order Code: \_\_\_\_\_  
 Approvals: \_\_\_\_\_