

Richland Two Door Linen Cabinet

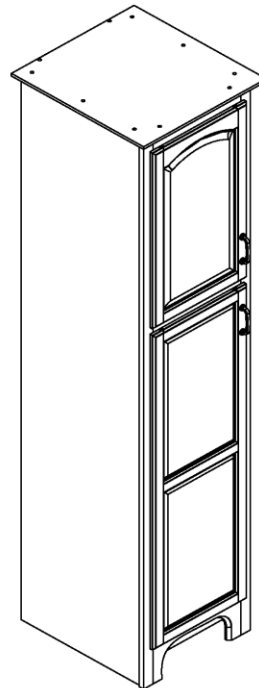
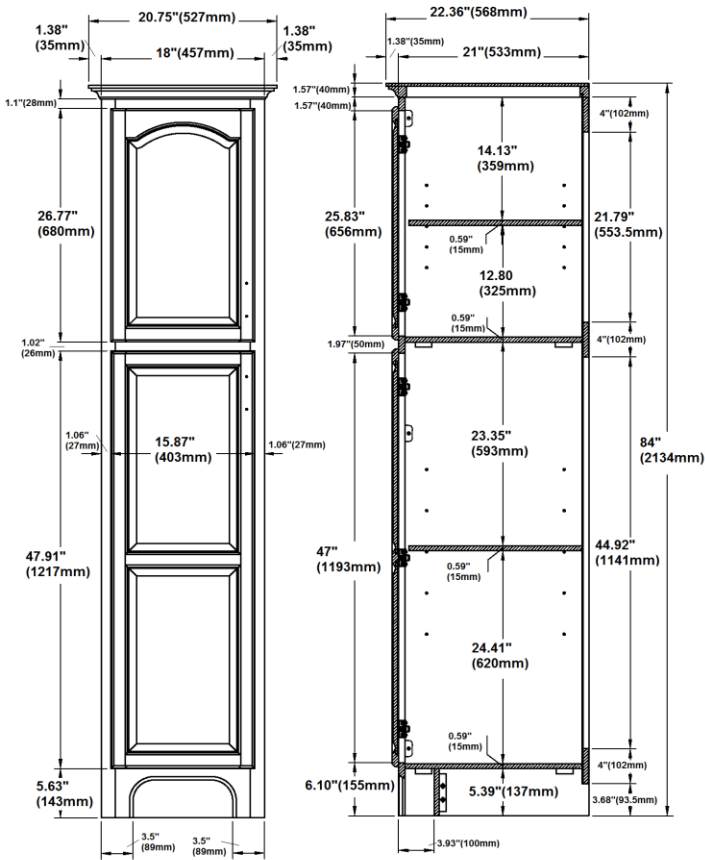


Specifications

- Cam-lock connectors for fast & easy assembly
- Raised panel doors featuring square and cathedral designs
- Solid oak front frame & door frames
- 2 doors and 2 adjustable shelves
- Antique brass hardware with TruMatch™ finish
- Durable water-resistant finish
- Nugmeg Oak Finish



Dimensions



530444
20.75" (527mm) x 22.36" (568mm) x 84" (2134mm)

Warranty & Compliances

Warranty: Limited 1 year warranty
California 93120: Compliant



Order Codes & Finishes/Colors

18" w x 21" d x 84" h

530444

Type:
Job:
Order Code:
Approvals: