

Concord Two Door Vanity

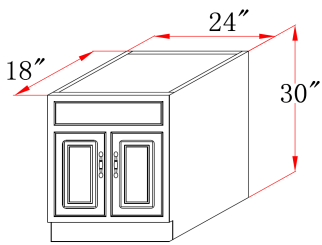


Specifications

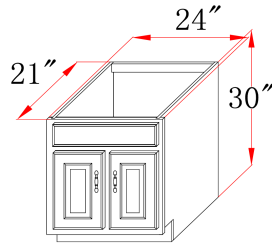
- MDF square panel doors fronts
- Full frame design
- 1/2" plywood sides
- Concealed adjustable hinges
- Satin nickel hardware included
- Cam-lock connectors for fast & easy assembly
- Vanity top sold separately
- Durable White Gloss Finish



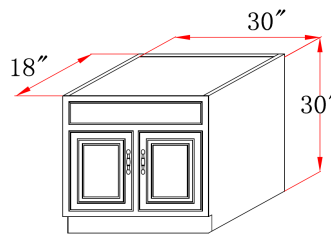
Dimensions



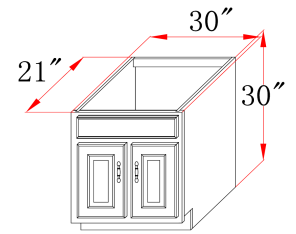
531251



541029



531277



541045

Warranty & Compliances

Warranty Limited 1 year warranty
California 93120 Compliant



Order Codes & Finishes/Colors

| | |
|--------------------|--------|
| 24"w x 18"d x 30"h | 531251 |
| 24"w x 21"d x 30"h | 541029 |
| 30"w x 18"d x 30"h | 531277 |
| 30"w x 21"d x 30"h | 541045 |

Type:
Job:
Order Code:
Approvals:

Design House reserves the right to make changes in materials, specifications & models at any time. Design House also reserves the right to discontinue product without notice or obligation.