

# Claremont Two Door Linen Cabinet

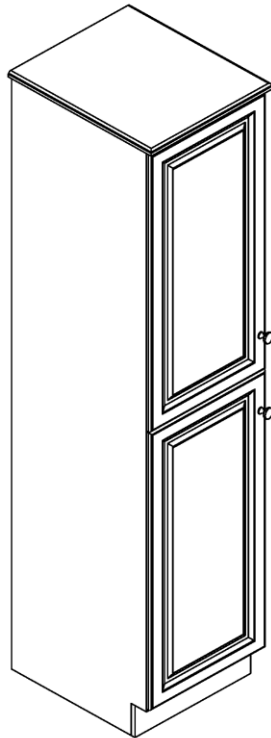
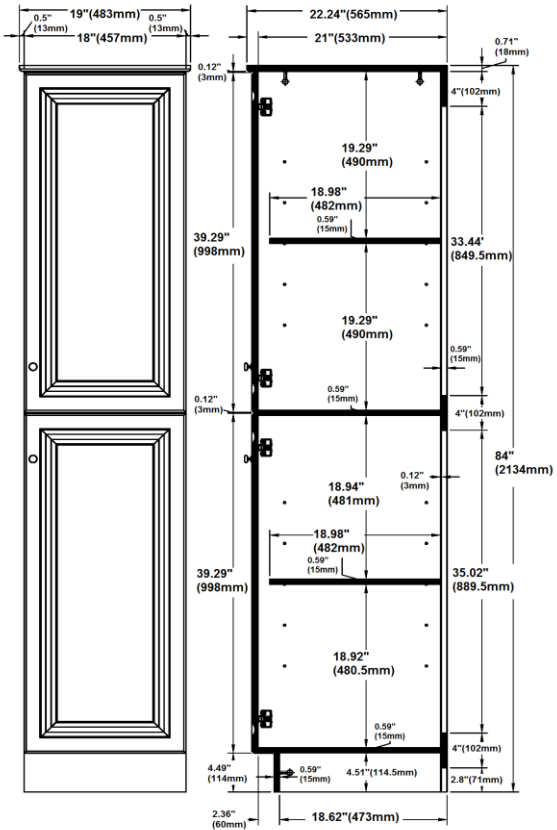


## Specifications

- Solid North American red oak door frame
- High quality MDF with real oak veneer door centre
- Particle board with oak melamine inside and outside side panels
- Raised panel veneer, full overlay door design
- Antique brass hardware
- Concealed, adjustable hinges
- Cam-lock connectors for fast & easy assembly
- 2 door and 2 adjustable shelves
- Antique Brass hardware with TruMatch finish



## Dimensions



539700  
19" (483mm) x 22.24" (565mm) x 84" (2134mm)

539924:  
19" (483mm) x 22.24" (565mm) x 84" (2134mm)

## Warranty & Compliances

Warranty: Limited 1 year warranty  
California 93120: Compliant



## Order Codes & Finishes/Colors

18"w x 22.25"d x 84"h      539924

Type:  
Job:  
Order Code:  
Approvals:

Design House reserves the right to make changes in materials, specifications & models at any time. Design House also reserves the right to discontinue product without notice or obligation.