

# Concord Two Door Vanity

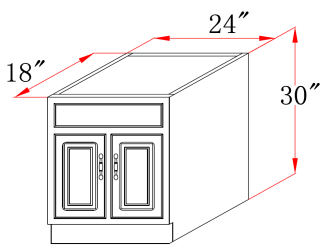


## Specifications

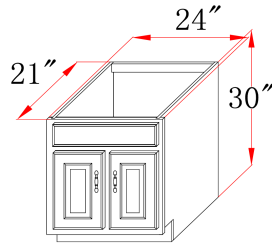
- MDF square panel doors fronts
- Full frame design
- 1/2" plywood sides
- Concealed adjustable hinges
- Satin nickel hardware included
- Cam-lock connectors for fast & easy assembly
- Vanity top sold separately
- Durable White Gloss Finish



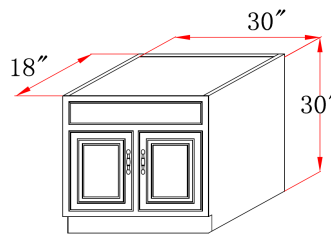
## Dimensions



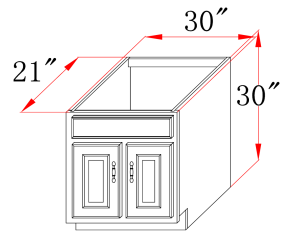
531251



541029



531277



541045

## Warranty & Compliances

**Warranty** Limited 1 year warranty  
**California 93120** Compliant



## Order Codes & Finishes/Colors

24"w x 18"d x 30"h	531251
24"w x 21"d x 30"h	541029
30"w x 18"d x 30"h	531277
30"w x 21"d x 30"h	541045

Type:  
 Job:  
 Order Code:  
 Approvals:

Design House reserves the right to make changes in materials, specifications & models at any time. Design House also reserves the right to discontinue product without notice or obligation.