

# Richland Tri-View Lighted Medicine Cabinet

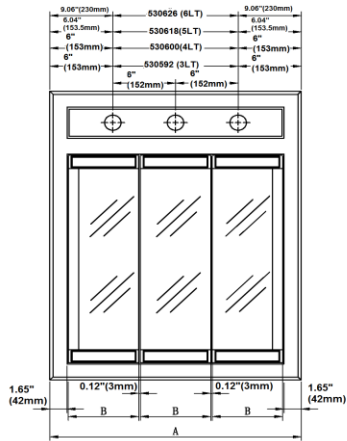


## Specifications

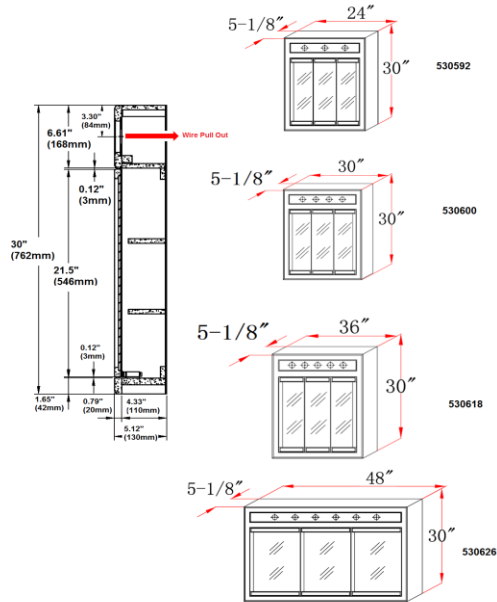
- Nutmeg Oak Finish
- Concealed hinges
- Pre-assembled design
- 3 Doors
- 2 Shelves
- Solid Oak Frame
- Durable water resistant finish
- Light bulbs not included



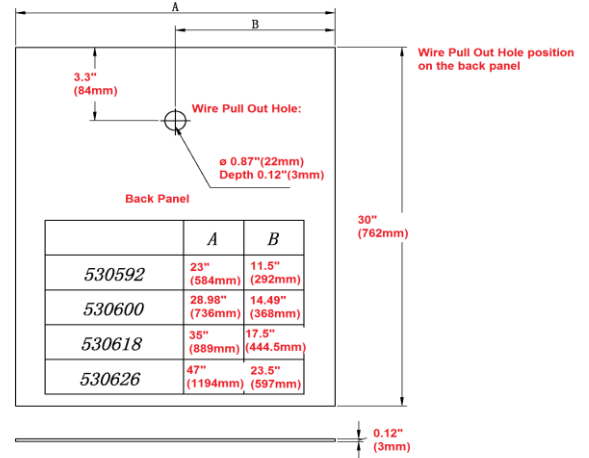
## Dimensions



Item#	A	B	LT
530592	24" (610mm)	6.75" (171mm)	3
530600	30" (762mm)	8.74" (222mm)	4
530618	36" (915mm)	10.73" (273mm)	5
530626	48" (1220mm)	14.76" (375mm)	6



### Wire Pull Out Hole position on the back panel



## Warranty & Compliances

Warranty: Limited 1 year warranty  
California 93120: Compliant



## Order Codes & Finishes/Colors

- 24" w x 5" d x 30" h Uses three 60-Watt, medium base bulbs 530592
- 30" w x 5" d x 30" h Uses four 60-Watt, medium base bulbs 530600
- 36" w x 5" d x 30" h Uses five 60-Watt, medium base bulbs 530618
- 48" w x 5" d x 30" h Uses six 60-Watt, medium base bulbs 530626

Type:  
Job:  
Order Code:  
Approvals:

Design House reserves the right to make changes in materials, specifications & models at any time. Design House also reserves the right to discontinue product without notice or obligation.