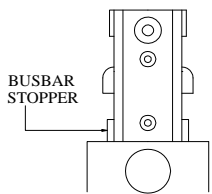
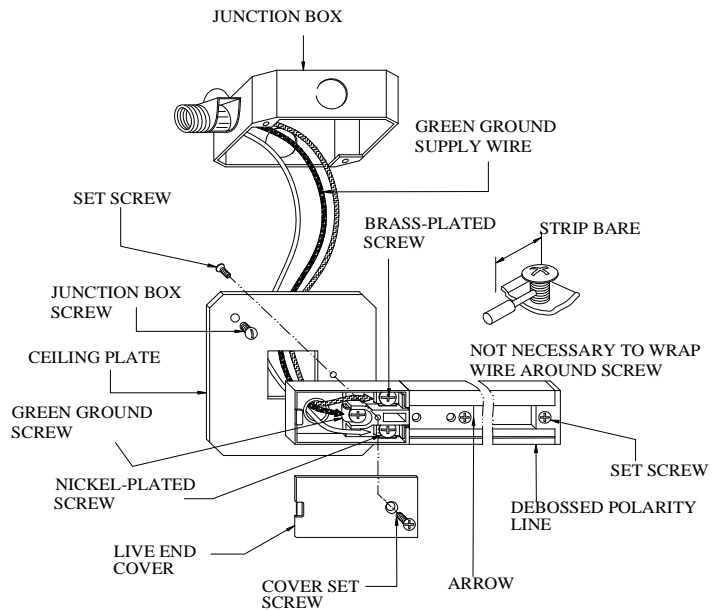


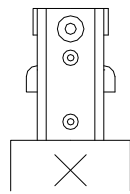


**Model Numbers 910653, 910661, 910679 and 910687**  
**ASSEMBLY /INSTALLATION INSTRUCTIONS**

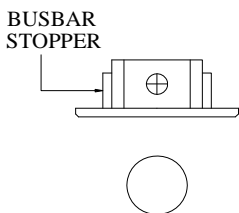
1. Before beginning the installation, carefully unpack and identify all parts.
2. Turn off power while installing or servicing this fixture.
3. Remove flat head set screw from the back of live end fitting and use to fasten ceiling plate to live end fitting.
4. Remove cover from live end fitting. Place track with ceiling plate attached to junction box and mark on ceiling or wall the position of the track mounting holes ( **CAUTION : Arrow mark on live end fitting should point to debossed polarity line after assembly** )
5. Fasten ceiling plate to junction box with two screws. Pull wires from box thru open hole in live end as shown.
6. Cut and strip wires from box and fasten black supply wire to brass-plated screw; white supply wire to nickel-plated screw; green ground supply wire to green ground screw by rotating the screws tightly.
7. Push excess wires back to junction box and recap the cover by screw.



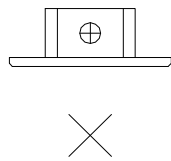
**CORRECT**



**INCORRECT  
DANGEROUS**



**CORRECT**



**INCORRECT  
DANGEROUS**

**WARNING :** To avoid potential risk of fire and short circuiting, always use the connectors and end cap with busbar stoppers (See drawing below with "O" mark ) for your track system.

**IF IN DOUBT ABOUT ELECTRICAL INSTALLATION, CONSULT A LICENSED ELECTRICIAN.**

*Customer Service : 1-800-558-8700*